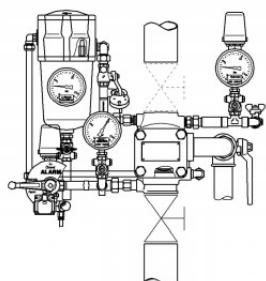


DRY PIPE ALARM VALVE SET TAV - prosystemitalia.com

# DRY PIPE ALARM VALVE SET TAV - Group 526



## Application

The alarm valve works as a normal check valve, but it can generate alarms when is activated.

The piping are filled with air pressure, or nitrogen. The breaking of a sprinkler generates a pressure drop which drives the opening of the alarm valve allowing water to reach the dispenser.

Application even on installations subject to freezing.

## Scope of delivery

The station is delivered fully assembled, complete with: body dry pipe valve flange at the bottom and grooved at the top, trim, outside screw gate valve, 2 gauge, 1 switch, throttle SE2 and related accessories.

Attention: alarm gong and gate valve must be ordered separately.

## Technical Data

Max pressure admitted: 16 bar

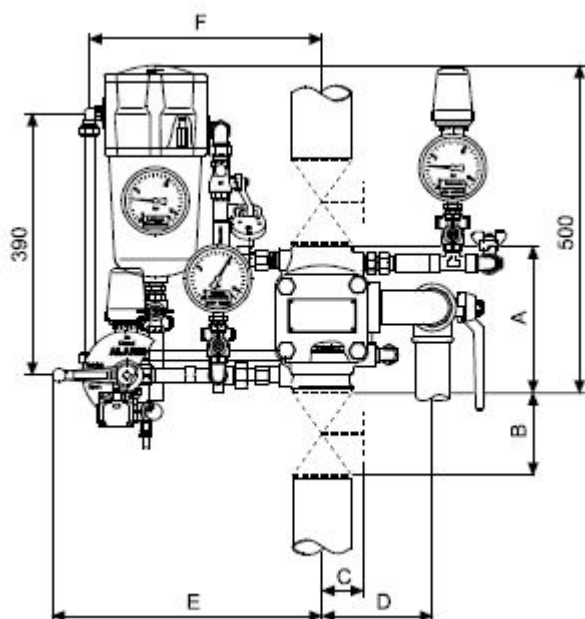
Max working temperature: 60°C

Max working pressure: 12,5 bar

Water supply pressure: 3 bar

Type	NB	Equivalent lengths [m]	c [mm]	f [mm]	g [mm]
TAV80-FS-VdS	80	4,4	342	500	173

Type	NB	Equivalent lengths [m]	c [mm]	f [mm]	g [mm]
TAV100-FS-VdS	100	8,0	355	525	203
TAV150-FS-VdS	150	11,6	382	570	223
TAV80-FS-FM	80	4,4	342	500	173
TAV100-FS-FM	100	8,0	355	525	203
TAV150-FS-FM	150	11,6	382	570	223
TAV80-SS-VdS	80	4,4	342	500	173
TAV100-SS-VdS	100	8,0	355	525	203
TAV150-SS-VdS	150	11,6	382	570	223
TAV80-SS-FM	80	4,4	342	500	173
TAV100-SS-FM	100	8,0	355	525	203
TAV150-SS-FM	150	11,6	382	570	223



## Approvals

CE, FM, VdS.



Tipo	Kg	Pezzi per confezione	Codice Articolo
DN 80 F/S	35.1	1	850003